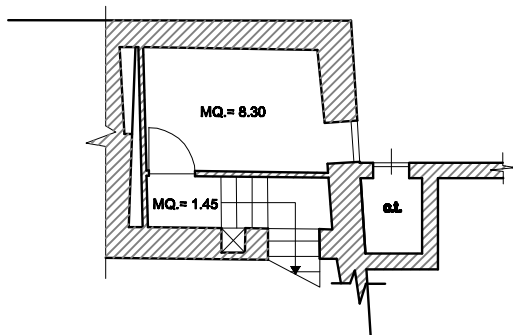


**PIANO TERRA**

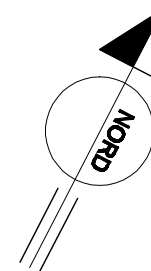


**PIANO SEMINTERRATO**

**SUPERFICIE LORDA P.S.+P.T.+P.P. = MQ 409.71 CIRCA**

**SUPERFICIE PORTICO 1 = 65.00 MQ CIRCA**

**SUPERFICIE PORTICO 2 = 12.60 MQ CIRCA**



**SCALA 1:100**